



TECHNICAL DATA:

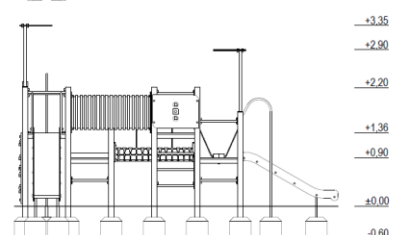
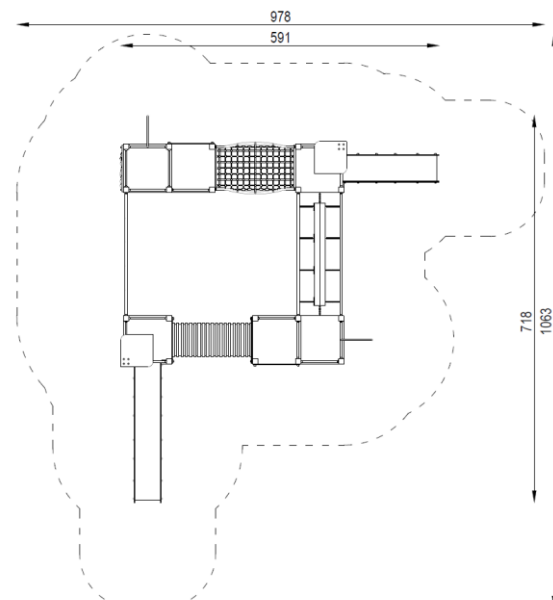
Not easily accessible device,
according to standard EN 1176-1:2017

Device dimensions: 5,91 x 7,18m
 Device height: 3,35m
 Minimum space: 9,78 x 10,63m
 Falling area: 65,90m²
 Critical fall height: 2,20m
 Foundations depth: -0,60m

The device according to EN 1176-1:2017
 Playground equipment and surfacing – Part 1:
 General safety requirements and test methods

Safety surfaces:
 - sand, gravel, bark, synthetic surface
 - minimal thickness for loose particulate materials 300+100mm
 - synthetic surface according to critical fall height

Top view with falling area



COMPONENTS:

Tower with roof, platform 0,90m	1 pc
Tower with roof, platform 1,36m	1 pc
Tower without roof, platform 0,90m	2 pcs
Tower without roof, platform 1,36m	2 pcs
Vertical climbing wall 1,36m	1 pc
Vertical ladder	4 pcs
Slide 0,90m	1 pc
Slide 1,36m	1 pc
Fireman's pole 0,90m	1 pc
Fireman's pole 1,36m	1 pc
Rope bridge	1 pc
Tunnel passage	1 pc
Movable bridge	1 pc
Vertical rope net	1 pc

MATERIALS:

Construction poles:	recycled material
Anchors:	galvanized steel
Flat decorative elements:	HDPE sheets
Platforms:	recycled material
Steel elements:	galvanized steel, powder coated
Chains:	galvanized steel, calibrated
Surface of slide:	stainless steel
Climbing walls:	recycled material, climbing grips, based on resins
Tunnel:	PVC pipe fastened to HDPE boards
Ropes:	polypropylene braided with a steel, interconnected by plastic fasteners
Caps:	plastic
Foundations:	concrete min. C12/15 standard